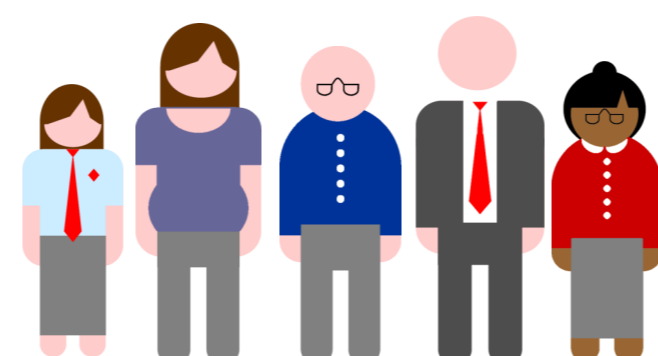


ANNANDALE AND ESKDALE COTTAGE HOSPITALS

Currently across Annandale and Eskdale we...



...spend
£4.15 million
running 4 cottage
hospitals...



...providing
5,850 outpatient
appointments
and
425 inpatient stays...

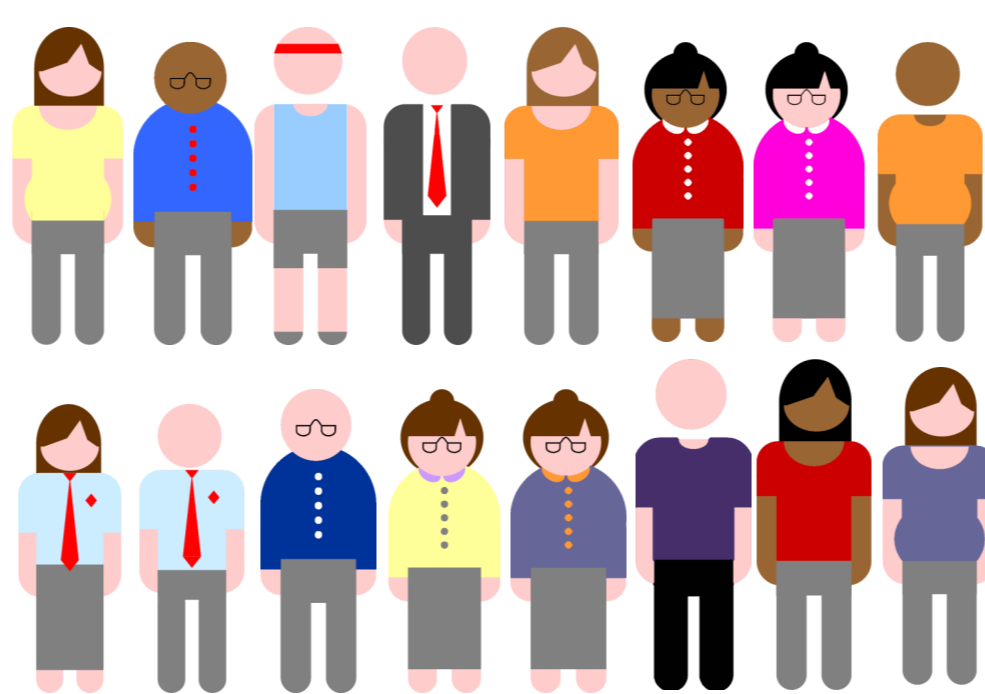


...where **48%** of people
in hospital could have
been better treated in a
different setting.

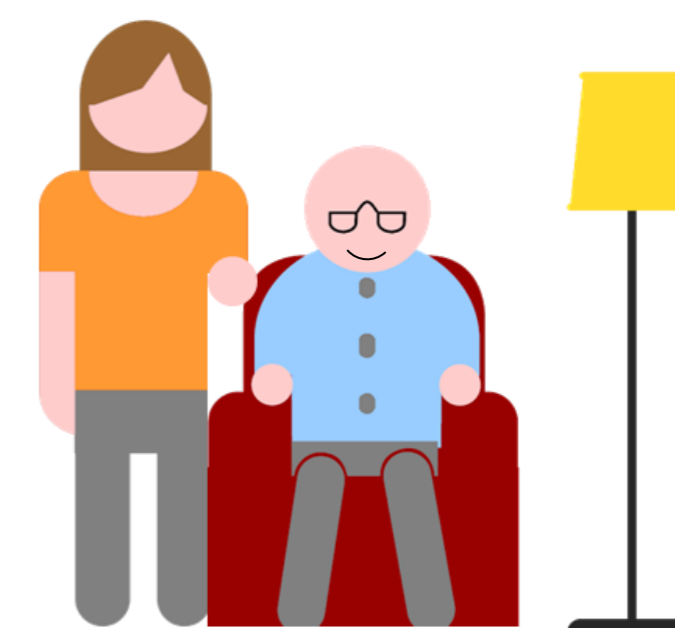
If health and social care was provided in a different way, we would
be able to...



...spend the
same amount
of money...



...provide care and
support for **more**
people...



...by ensuring that they
people had the
right treatment at
the **right time** in the
right place.