

INVESTING IN ANNANDALE AND ESKDALE

In 2017/18 **£4.15 million** was spent running 4 cottage hospitals across Annandale and Eskdale.

There is the equivalent of **117 full time staff** employed at these hospitals.



In Annandale & Eskdale for 2017/18 the estimated spend will be ...

£130,000 for health centres and clinics

£300,00 for occupational health

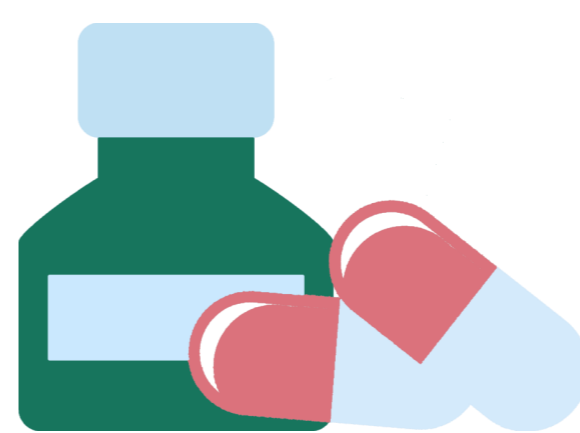
£350,000 for podiatry.

The total cost of medication dispensed during 2016/17 through primary care in Annandale and Eskdale was

£7.9 million.

The average annual cost per person on medication was **£244.**

The average across the rest of Dumfries and Galloway was **£257.**



270

people were in residential or nursing care in Annandale & Eskdale at 29th November 2017.

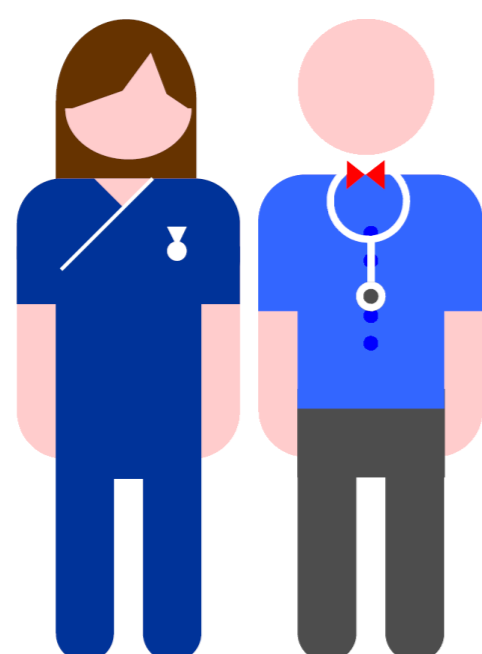


In 2017/18 it is estimated that **£12.3 million** will be spent on social care and support across Annandale and Eskdale

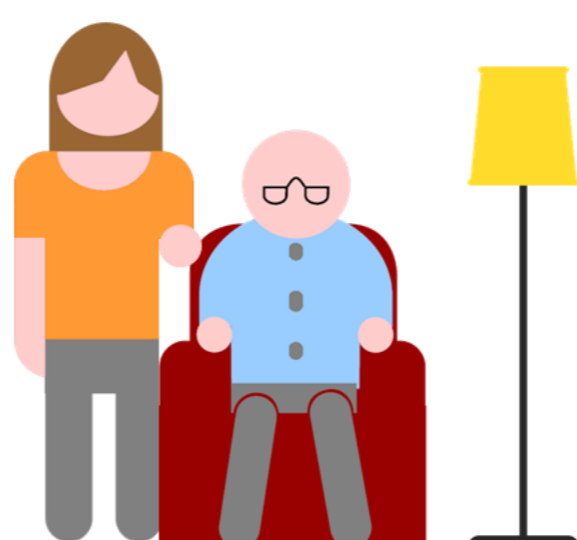


£1.2 million

will be spent on community nursing in 2017/18 across Annandale and Eskdale.



Work is underway to develop **Extra Care Housing** across Annandale and Eskdale.



The **Flow Co-ordinator** works closely with hospital staff, care providers and social work services to support people moving from hospital to their home or a to a homely setting.



Annandale and Eskdale are investing in **Community Link Workers** to listen to what really matters to people and find solution and ways to improve their health and wellbeing